

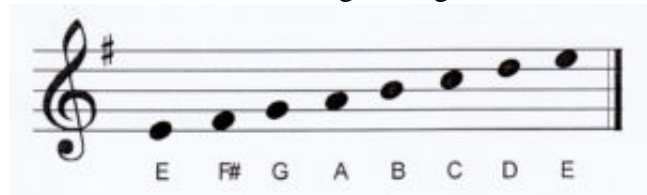
## How to recognize the basic tone

[caption id="attachment\_1172" align="aligncenter" width="331"]



How to recognize the basic tone[/caption] [Basic](#)

[Key Tone](#) The key of the basic tone or can be referred to as a key signature is a sharp / # (flat) or flat / mol (b) mark that is placed in groups in the stave of staff to mark the basic tone used in a musical or song. In writing the notation number will be found a description of Do = C, Do = D, etc., but in the note notes, there is no information such as Do = C. How to know the basic tone is only done by placing key signature (# and b) in The beginning of the song. Here is the position of key signature placement on the stave (Remember!) Key signature is always placed before time signature (4/4, C, 3/4 etc.) The position of the key signature should not be moved (example See picture below: basic tone G has the # mark on the top line, should not be placed indiscriminately. so lets to learn How to recognize the basic tone Friends, it is recommended to memorize the location of key signature on the stave, either the sign # or b. [caption id="attachment\_1173" align="alignnone" width="300"]



g mayor with key[/caption] Ladder major by using key

signature, see picture above When the basic pitch mark is written, then the mark applies to the affected note up or down. For example, look at the picture above, the shredded note is F, then not all F notes become F # inside the music. No need to write # in the notes, because it is already represented at the beginning of the music mark.